

End-to-End

The Parish Magazine of Rivenhall and Silver End



We would love to see St Mary's full again this Christmas please come to our Carol Service on the 18th December.

November

2022

50p

The Following are our services For November 2022

6th November

9.30 am St Francis

11 am St Mary's

3rd Sunday before Advent

Holy Communion

All Age Worship

13th November

10.50 Remembrance in Silver End in the Village Hall

11 am St Mary's

Remembrance Sunday

Holy Communion (Probably)

Remembrance Sunday St Mary's

13th November 10.50 am

**At the War Memorial with our Regular Bugler
Followed By a service in the Church at
11 am**

20th November

9.30 am St Francis

11 am St Mary's

18th Sunday Next before Advent

HC

Matins

27rd November

9.30 am St Francis

11 am St Mary's

1st Sunday of Advent

Morning Prayer

Holy Communion

Church Contacts

All Contact should be Via the Churchwardens

Churchwarden Ann Clarke

01376 514825

Churchwarden Peter Hope

01376 502605

Email phope02@gmail.com

Rivenhall Contact Carole McCarthy

01376 512781

Silver End Contact Ruth Aitken

01376 583846

Rivenhall Website

www.stmarysrivenhall.co.uk

St Francis Silver End Website

www.st-francis.org.uk/

Contact the Editor 07904 235101 or phope02@gmail.com

Important information for the Parish of Rivenhall and Silver End From Your Church wardens

Ann Clarke and Peter Hope

During the last year the Team Ministry in Witham has been struggling to offer church services and the important parts of Ministry such as pastoral care and home visits. While we have managed to keep some degree of normality at the Churches in Rivenhall and Silver End this has been the result of incredible efforts by our Team Leader Rev. Jonathan Pritchard and various non stipendiary priests as well as, of course the church officers and PCC members.

This situation has resulted in the need for a certain degree of flexibility on our part! The Church wardens would particularly like to thank Ruth Aitken, deputy warden at St Francis, Rev. Christine Newmarch and the Rev. Val Drury, who have been of particular importance in maintaining services in Rivenhall and Silver End.

It is now a year since Rev. Paulie departed the Witham Team for his new Church in Tadcaster and more recently Rev. Will Abbot moved to his first parish from his position as curate in the Witham Team Ministry. Following many meetings and much discussion a job specification for two Team Vicars was produced and advertised in the Church Times. We are delighted to report that we have had a few applications!

The candidates will be interviewed in the first week of November and those on the PCC will be taking the opportunity to hear the candidates preach at Terling Church on the morning of November 1st. If all goes well, we will appoint two new Team Vicars who will probably take up their positions after Christmas. Rev. Jonathan has worked incredibly hard to enable us to get to this point and expects that as a result of the growing team our service to all the village Communities will blossom!

The downside of the above is that to support the growth of the team we will need to continue to cover the cost from our regular giving and we know that at this time it is very difficult for everyone. We will be looking at ways we can help

to change and restyle our services and if anyone feels they would like to get more involved with the Church, your input would be most welcome. Contact details are available on the inside of the cover.

Covid was and still is a major concern and during the periods of lockdown our church numbers dwindled significantly. While we now see light at the end of that particular tunnel and have seen some growth in attendances over recent months we are still down by a significant number. As a church we are very welcoming and would love to see more families bringing their children to our all age worship service held on the first Sunday of every month.

Our next celebration is:

18th December 2022 11 am

St Mary's Church Rivenhall

A Service of

Nine Lessons and Carols

Led by the Rev. Jonathan Pritchard

**Please come and bring your friends and relatives to
sing traditional Carols in a beautiful Church.**



**Also Note Our Usual Service of Remembrance will be
held on the 13th November Starting at 10.50 am**

Readings and Collects for November 2022

6th November 16th 3rd Sunday before Advent

All Age Worship with Baptism

Job 19:23-27a

2 Thessalonians 2:1-5, 13-end

Luke 20:27-38

Collect

God, our refuge and strength,
bring near the day when wars shall cease
and poverty and pain shall end,
that earth may know the peace of heaven
through Jesus Christ our Lord.

13th November Remembrance Sunday

Holy Communion

Readings

Malachi 4:1-2a

2 Thessalonians 3: 6-13

Luke 21:5-19

Collect

Lord of the nations,
Saviour and judge of all:
remove from human hearts all bitterness and hate,
grant to those who have died in war your mercy and forgiveness
and bring us all to the peace of your eternal Kingdom;
through Jesus Christ our Lord, who suffered and died,
and now lives and reigns with you and the Holy Spirit,
one God, world without end

20th November Sunday Next Before Advent

Matins

Readings

Jeremiah 23:1-6

Colossians 1:11-20

Luke 23:33-43

Collect

God the Father,
help us to hear the call of Christ the King
and to follow in his service,
whose kingdom has no end;
for he reigns with you and the Holy Spirit,
one God, one glory.

27th November 1st Sunday of Advent
Holy Communion

Readings

Isaiah 2:1-5

Roman 13:11-end

Mathew 24:36-44

Collect

Almighty God,

give us grace to cast away the works of darkness

and to put on the armour of light,

now in the time of this mortal life,

in which your Son Jesus Christ came to us in great humility;

that on the last day,

when he shall come again in his glorious majesty

to judge the living and the dead,

we may rise to the life immortal;

through him who is alive and reigns with you,

in the unity of the Holy Spirit,

one God, now and for ever.

The 50/50 Club October 2022 winners

1st A Marshall

2nd P Hope

3rd Denise

RIVENHALL PARISH COUNCIL

NOTES OF MEETING HELD 4TH OCTOBER AT VILLAGE HALL

These notes are an abridged version of the minutes.

Present: Cllrs. Abbott (Chairman), A'Lee, Cairns, Elliott, Prime and Turner.

Also present: Parish Clerk and ECC Cllr. Playle.

Chairman's Report

The work to paint and repair the village green posts is now complete. I would like to thank the contractor for doing such a good job and to Braintree District Council for assisting the

parish council with the cost of the work.

This year the parish council has also completed the tree planting project and is looking forward to news from BDC about our applications for rewilding areas and wildflower verge enhancements.

The environment of the parish is very important to local residents and I would like to again acknowledge the work of our regular litter pickers and thank all those volunteers who take the time to pick up litter, which also helps greatly to keep Rivenhall looking good.

Public Forum

ECC Cllr. Playle reported the following: A120 closure for repairs; A12 widening project; roadside verge cutting in Rivenhall is due from 14th October; ECC financial support in cases of winter hardship and the ECC pothole repair programme. He was asked questions regarding the following BDLHP projects: New Church Road public footpath which has been under discussion for about 2 decades and the Church Road zebra crossing safety audit.

Members expressed their sadness and condolences at the passing of the late Queen Elizabeth II and their good wishes for the reign of King Charles III.

Matters for Discussion

Glass bus shelter

A new wooden seat, smaller than the original one, has been installed to replace the inadequate plastic one.

RPC website

Nebulas, the website hosts, had provided a quote for updating the site each month. It was **agreed** that the Clerk progress this with Nebulas.

Highway Maintenance

The Chairman is still in discussion with National Highways re the A12 issues – bus stops, footway/cycleway and streetlights.

BT Openreach has still to repair the damaged cover in

Rickstones Road. (Post meeting note: Openreach say they cannot source a replacement cover and will need to replace the whole of the top of the chamber.

Church Road is to be closed for three days for pothole repairs at the end of the month.

BDC has been requested to trim back one of the trees along Church Road so as to improve visibility for HGV drivers approaching the highway warning signs.

ECC Cllr. Playle was requested to enquire regarding the reinstatement of the 30mph countdown sign along Church Road and the repair to the streetlight at the entrance to the Beech Road garage site.

General Maintenance

The painting/repair to the Village Green posts has been completed. It was **agreed** to settle the invoice and the Clerk will contact BDC re their 50% match funding grant offer.

Mr. Little will be requested to provide a quotation to repair the brickwork at the steps leading from St. Mary's Road to Church Road.

Planning Applications

There were no new applications or results to be considered.

Appeals - Bellway Phase 4

It was agreed to write to the Planning Inspector reiterating the council's original objections and supporting BDC's original refusal of this application. Also emphasising that BDC has formally adopted its Local Plan which excludes this site and requesting that RPC be given permission to officially speak at the Public Inquiry.

Planning Enforcement

Public concerns have been raised regarding elements of the Bluebells development which had not been completed. The Chairman has contacted BDC to request that this be followed up.

Ongoing Major Issues

A12 to A120 widening

A joint meeting with parish councillors from Lt. Braxted, Gt. Braxted and Rivenhall had been arranged for Wednesday 12th October. RPC Chairman agreed to attend.

The Chairman had asked National Highways if representatives for the A12 Development Consent Order project could come to Rivenhall for an information meeting to assist local residents most closely affected by the works. (Post meeting note: This was agreed and a meeting was held on 24th October at Henry Dixon Hall).

It was **agreed** that RPC register to participate in the DCO Examination and make relevant representations on the DCO.

It was **agreed** that in the future the existing A12, being de-trunked, should remain at 4 lanes based on the range of local measures being offered by National Highways for the de-trunked section.

BDC Local Plan

BDC having formally Adopted the Local Plan as recently as July, has recently announced that it no longer has the required 5 years-worth of Housing Land Supply.

Rivenhall Airfield Major Waste Site

An appeal has been lodged with the Secretary of State re application ESS/34/15/BTE/66/1 which was refused by ECC. It was **agreed** to write to the Secretary of State in support of the original ECC decision to refuse this application, which would in effect have allowed the site developers to build an "alternative" to the long-standing permission.

The dates for the arrival of the next three abnormal loads are in late October and in November.

Finance

Grant request from the PCC for a replacement mower for the

churchyard

It was **agreed** to make a grant of £250 towards the cost of a replacement mower.

Information exchange and items for the November agenda

- * Appleford Bridge repaired with unmatched brickwork
- *` Public Rights of Way for the November agenda.

Dates of future meetings

1st November at Rivenhall Village Hall and 6th December at Henry Dixon Hall, both starting at 7.30pm.

Crundle Pudding

I think I have done this recipe before, but I cook it often and we love it

This recipe was given to me many years ago by my godmother.

- 6 oz Self Raising Flour
- 4 oz margarine
- 4oz castor sugar
- 2 eggs
- 1 pint milk

Rub the marg into the flour till you get breadcrumbs, then stir in the sugar.

Gently warm the milk and beat the eggs into it. Then stir the liquid into the flour etc.

Pour into a large (2 pint) and greased soufflé type dish. The mixture will be runny.

Cook in oven (Gas 4 – Elec 180) for 45 mins.

The pudding will miraculously have light sponge at the top and delicious bottom. Best eaten warm straight from the oven with cream. If left it is still yummy but it sets firmly when cold.

Sky Notes

November 2022

Mars becomes prominent this month and is very well placed by late evening, high up in the South East, in the constellation of Taurus, which can be found above the familiar outline of Orion.

By the last week of November the Red Planet has become brighter than any of the stars as it nears opposition on 8th December

There are numerous missions to Mars currently active, including on the surface and orbiters imaging the planet and measuring the atmosphere.

NASA's Perseverance rover is exploring an ancient river delta and drilling rock samples in an area that might tell us whether life ever existed on Mars in the past when the planet was warmer and wetter than now.

Future missions aim to return rock samples back to Earth – allowing for much more detailed analysis. However, we do already have nearly 200 samples in the form of meteorites – small chunks of Mars blasted from its surface by impacts, that after journeying through space, have landed here on Earth. In 1996 one of these led to a media frenzy when it was announced that microfossils had been found within it, now a controversial claim.

Jupiter remains prominent and throughout the month can be seen in the South around 9pm GMT. The gibbous Moon will pass just below Jupiter on the evening of the 4th.

The Full Moon this month falls on the 8th. There will be a lunar eclipse, but unfortunately not seen from the UK – observers in parts of the USA and Canada will have a good view.

On the night of the 17th/18th November, the Leonid meteors reach their annual peak. Seeing them does require staying up late, as the 'radiant' (the point in the sky that the meteors appear to emerge from) only rises in the East at around midnight. Also, there is some interference from the light of the waning Moon.

The Leonids have a pattern of moderate activity for several decades, then a sharp burst of much higher meteor rates every 33 years. The last time this happened was in the late 1990s when on one night meteors were seen to flash across the sky every few

COLEMANS COTTAGE FISHERIES

Lakeview Tearooms

Come and enjoy the view whilst
having a bite to eat



Open Thursday to Sunday 9am to 3pm
Breakfast, Lunches
Bar, Snacks
Afternoon Tea
Sunday Roast (01376 516383 to Book)

For more information go to:

<http://www.colemansfisheries.co.uk/witham/cafe/>

Colemans Cottage Fisheries

Little Braxted Ln, Witham CM8 3EX

FREE PARKING 01376 516383

J. Grow, Flourish. Succeed Academy Nursery



Opening September 2022, we are
pleased to be offering a nursery
for children ages 2 years and up.

Each session will cost £10 (£20
for a full day)

Nursery sessions will in term time:

Mornings: 8.45am - 11.45am

Afternoons: 11.45am - 2.45pm

All Day: 8.45am - 2.45pm

If you would be interested in a
place, please email
[nurserysil@connectedlearningmat.
co.uk](mailto:nurserysil@connectedlearningmat.co.uk) with your child's name, date
of birth and the sessions and days
you require.

Aerial Photography

Barns

Chimneys

Roof Tops

COST EFFECTIVE, SAFE ACCESS,
ROOF TOP INSPECTIONS BY
DRONE WITH NO NEED FOR
SCAFFOLD, TEMPORARY WORK
OR STRUCTURES REQUIRED.



NON DISRUPTIVE, FAST AND
PROFESSIONAL SERVICE, SAME
DAY REPORTS AND
RECOMMENDATIONS FOR
REPAIRS

FULLY CAA AND CIOB
REGISTERED, QUALIFIED AND
INSURED SERVICE. CARRIED OUT
BY EXPERIENCED SURVEYORS.

Call to discuss your requirements;
Chris: 07817219133
Jim: 07966403783
email: highsightse@gmail.com

Historic Buildings Monitoring

Building Inspections

Estate Records

ANGLIA TREE SERVICES

Specialist tree surgery

Residential & Commercial Customers

CROWN REDUCTION • FELLING • TOPPING

HEDGE TRIMMING • ALL GARDEN WORK

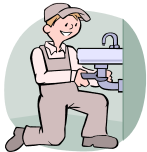
STUMP GRINDING

For a quick, tidy and friendly service call:

Tel: 01621 892831



7 DAYS A WEEK • EMERGENCY SERVICE AVAILABLE • FULLY INSURED



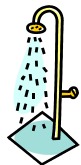
Philip Little

Property Maintenance Magician

Local service at local prices

Knowledgeable and friendly

07973 129808 or 01376 515257



Serving the Local Community for over 125 Years

G. COLLINS & SONS

Funeral Directors Ltd



30 RAYNE ROAD, BRAINTREE, CM7 2QH

01376 342266

4 THE STREET, WHITE NOTLEY, CM8 1RH

01376 583750

WWW.GCSFD.CO.UK

**Beautiful Rooms For Rent
In
Witham & Braintree**

We have 4 Lovely houses
2 in Witham—2 in Braintree
With and Without en-suites

£90—£130 per Week

(All inclusive of Rates, Light, Heat, and with Broadband)

See our Website: - www.jbwpartners.co.uk

Or Call



Diss Mere

A visit to Diss and the surrounding area

October 17 to 24 Peter Hope (Ed.)

Recently a friend and I visited the area around Diss where we visited the Bressingham Steam Museum and the town.

This article will discuss the Diss Mere shown in the above picture at sunset and in an aerial picture available from the Internet on the next page.

The Mere is the subject of much geological debate and also many rumours of what is down there. As you will see on the next page the lake or Mere as it is more correctly called is almost perfectly circular. This has led to much speculation that it is the caldera of an ancient volcano! A volcano on the Suffolk Norfolk border whatever next.

Diss takes its name from this body of water – Dic or Disce is the Saxon word for 'ditch of standing water' – and describes one of the deepest natural inland lakes in the country.

For many years, there was a persistent rumour: that the deep lakelet was, in fact, a flooded natural volcano crater, a remnant of a fiery past.

Like similar crater lakes, the Mere is almost circular but Norfolk has no records of volcanic activity and the landscape suggests there was none in the county.

Another suggestion was that the depression in which water pools was formed by “a historic plasma discharge event”. Details of which are not forthcoming.

Further tales claim the hole was created by a huge meteor



which fell from the sky and found its home in south Norfolk, before burning away and leaving a hole which was later filled with rain water.

All very mysterious although the true answer may be slightly less exciting.

The UK has not had active volcanoes for around 55 million years because the country is not particularly close to the edges of the tectonic plates that make up the Earth.

It is at these boundaries where volcanoes tend to form.

The geological history of the UK shows a rich variety of landscapes and formerly active regions of volcanism across the Lake District, Snowdonia, Northern Ireland, southern Scotland, western Scotland and Dartmoor.

It is however accepted that the most likely explanation for the formation of Diss Mere is that it is a natural basin caused by the collapse of the chalk bedrock at the end of the Ice Age.

In the harsh winters of the 19th century ice carnivals would be held and Diss residents would wear fancy dress and carry Chinese lanterns as they walked on the ice.

On one famous occasion in 1827, a cricket match was played on the Mere.

Beneath the deep water lies an estimated 23 metres of mud, and in this mud lies the eel population. During Victorian times the eels were said willingly to end their own lives by jumping out of the Mere due to the noxious waters.!

The Mere was, at this time, polluted by the hatters and dyers who dumped their mercury-rich waste into the water which, when added to the town's sewage, made for a potent brew that seemingly made death preferable to the eels.

That said it is estimated the Mere is now home to over 50,000 fish and once boasted a 122lb, 8ft long catfish and was also where an acrylic cast of a human head was dredged up.

The huge catfish or 'Monster of the Mere' was caught in August 2020 and was removed by the Environment Agency, taken to an undisclosed site and released.

Whether Diss' eels are still undergoing night-meres is unknown.

This story reminded me of my first and only acting experience at Primary School. I played the man from the Ministry of Agriculture and Fisheries in a play written by my form teacher who was called Mr Roach!. Of course his nickname amongst his class was Fishy and I wonder if that's what inspired him to write the play? Whatever the case strangely the story centered around an 8 ft long fish (Pike?). It makes me wonder if he came from Diss!

St Mary's Church Thorpe Parva near Diss

Don't Let this happen to our Church!



On one of our walks near Diss we came across this ruin of a Church, not that you'd know it.

Mentioned in the Domesday Book, the village of Thorpe Parva became deserted during the medieval period, and the Hall and the Church of St Mary are the only surviving buildings. The parish was united with Scole in 1482, and the church itself was demolished around 1540; the tower survives only due to its conversion into a dovehouse. By 1739 only one family lived in Thorpe Parva. Of the church, less than half the round tower survives, constructed of flint and lined with medieval brick. Aerial photographs indicate that the church was rectangular in plan, and it is believed to have stood within the southern end of the former village. Cropmarks and earthworks of the village also survive, as do the remains of a medieval moat.

**HELP WITH
FUNERAL ARRANGEMENTS
RICHARDS
FUNERAL SERVICE**



01376 513114

78 Newland Street, Witham, CM8 1AH

From advice on how to register a death to making all the arrangements, we're here 24 hours a day.

Members of the National Association of Funeral Directors
A British Owned Company www.dignityfuneral.co.uk

SpeedyBroadband.co.uk

***Sick Computers my
Speciality***

- Home Networking Problems Sorted Out
- Computer Viruses Removed
- Operating System Upgrades
- Upgrade to Windows 10

**FOR YOUR FREE SURVEY AND
QUOTATION CONTACT**

Peter Hope

Peter.hope@speedybroadband.co.uk

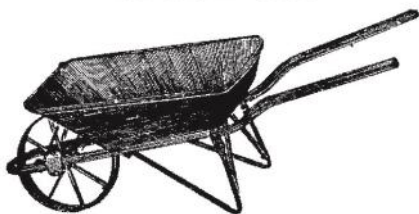
Tel: 01376 502605

Mob: 07904 235101

Website

www.speedybroadband.co.uk

**Ya Garden
Cares**



**Thorough Attention on
Bed Maintenance,
Mowing & Clearance**

**Telephone
Barry: 07732337626**

FOOT HEALTH PRACTITIONER



THE SMAE INSTITUTE

HOME VISITS



NAIL
TRIMMING

CORNS

CALLUS

THICK NAILS

HARD SKIN

COVERING:

Chelmsford

Witham

Danbury

Stock.....

JAMES NEWMAN (MCFHP,MAFHP)

TELEPHONE: 01376 519036

MOBILE: 07793971351



PC Doctor Operations Limited

**For all your computer
requirements including:**

Virus prevention, detection & removal
Broadband, Networking, Wireless & Firewall set up
Email & SPAM filtering
Hardware Repairs & Upgrades
Software Faults & Crashes
Backup Solutions & Data Recovery
Software Installation & Removal
Hardware & Software Supplied
Website Management • Computer Training

**Health
Checks
£39.99**

Office: 01621 891064 • Mobile: 07990 565336

Email: support@pcdocops.co.uk

Website: www.pcdocops.co.uk

Monthly subscription service available to provide complete "peace of mind" and allow you to spread the cost of your IT requirements.

Please contact for further information.



Brookend

VETERINARY PRACTICE LTD

62 Braintree Rd Witham

**CARING FOR THE PETS OF WITHAM AND
THE SURROUNDING AREA FOR 25 YEARS**

SPECIAL O.A.P. SURGERY THURSDAYS

CAT ONLY CLINIC WEDNESDAYS

Late night surgery Wednesday till 8pm

**Surgery Opening hours
Monday to Saturday for**

Tel: 01376 500038

www.brookendvets.co.uk

REYNOLDS

CARPENTRY SERVICES

**For all Carpentry, Joinery
& Cabinet Making Requirements**

CSCS Registered

30 Years Experience

4 Years Apprenticeship

City & Guilds and

Advanced City & Guilds Qualified

Free estimates – No obligation

All building work considered

Can also make items to order

also

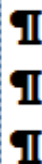
**'curtain poles, tiling, flat packs,
kitchens, doors, sheds etc, no jobs
too small'**

Contact

07889 110962

Answer phone at other times

Jeremy Larke Television services



Telephone: 01376 513645

Mobile: 07947 601619

Email: telerepair@aol.com

All Television Systems Catered
for Freesat, Freeview, Sky

- Installations & Repairs To all makes and models
- Full Plasma & LCD Fitting Service
- Wall Mount Brackets Supplied and Fitted
- Aerial & Satellite Dishes Fitted
- Freeview, Freesat & European Channels
- View and Control Your Sky in Other Rooms
- Aerial and Telephone Extension Points Installed



Don't Delay Call Today

Janet C Davies

Dip. F.D. M.B.I.F.D

**BRAINTREE & KELEVEDON'S LADY FUNERAL
DIRECTOR**

Offering a full and Comprehensive Funeral Service

Telephone 01376 339300

For a Personal and Caring 24 hour service

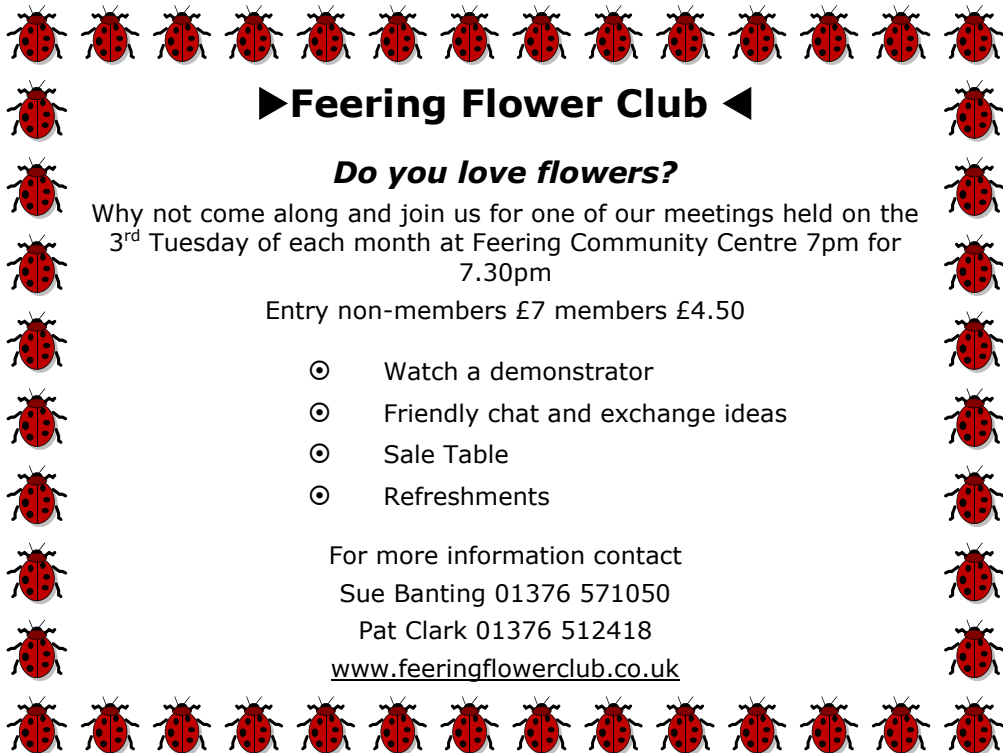
Local Chapel of Rest at Fern House 72 Coggeshall Road Braintree and
Victoria House, Trews Gardens, Kelvedon

Funerals are arranged and carried out in the Traditional Manner but
With 'The Gentle Touch'

Pre payment Plans available—Floral Tributes arranges—Woodland Burials
Bereavement Care—Low Cost Simplicity Funerals - Memorials—Printing
Catering—DWP Funerals

Part of the Hunnaball Family Group

Members of the National Association of Funeral Directors



►Feering Flower Club ◀

Do you love flowers?

Why not come along and join us for one of our meetings held on the 3rd Tuesday of each month at Feering Community Centre 7pm for 7.30pm

Entry non-members £7 members £4.50

- ⊙ Watch a demonstrator
- ⊙ Friendly chat and exchange ideas
- ⊙ Sale Table
- ⊙ Refreshments

For more information contact

Sue Banting 01376 571050

Pat Clark 01376 512418

www.feeringflowerclub.co.uk

DANIEL ROBINSON & SONS

Incorporating
W C BROWN & SONS

Independent Family Funeral Directors & Monumental Masons

A professional, caring, 24 hour service

Private Chapel of Rest

Fleet of air conditioned limousines

Horse drawn funerals available

Traditional and contemporary funeral services to suit your wishes

Funeral pre-payment plans

Arrangements may be made in the comfort of your own home, if preferred

Haslers Lane
Great Dunmow
Tel: (01371) 874518

7 Manor Street
Braintree
Tel: (01376) 320582

31 High Street
Halstead
Tel: (01787) 475533

www.drobinson.co.uk

Turning the pages of History Research by Tracy Scott

This month we look at the Workmen's Hall that was opened 150 years ago this month. So for those readers who do not whereabouts the Hall was, the best place to know where it stood is if you stand in the bus shelter on the Colchester bound side and you would be near where my family's front room was when we were the last caretakers of the hall up to when it was pulled down along with many other buildings on that side of the London Road to make way for the A12.

The Workmen's Hall was built through the kindness and liberality of Dr. Henry Dixon of Durwards Hall for the benefit of working men of Rivenhall, Kelvedon, Braxted and Witham.

He provided free for the workmen of Rivenhall and about 120 met at 6pm and showed appreciation of the refreshment of tea, cake, bread and butter. This included Rev. Hawkins, Mr & Mrs Taber and Mr & Mrs J. Taber, Mr & Mrs Potter and Mrs James Upson etc., After tea a meeting was held, presided over by Mr. Taber. A letter from Dr. Dixon was read by Mr. J. Taber. This explained his gratification at being able the purpose why he erected the hall of being able to promote education for the agricultural labourer with this hall and library. He held that labour was an honour and also those fed, clothed, and lodged the people by their labour should have a due share of the produce in their turn.

Having given the rules under which the hall would be managed in the future by trustees he concluded with a graceful tribute to thanks to Sir William and Lady Tite and other friends who had aided in the work.

During the evening Lady Tite presented a pianoforte to the hall and Sir Tite (MP for Bath at that time, also an architect of London's Royal Exchange Building, Banks and many railway stations) presented a handsome clock (now in the village church) a bagatelle board and a donation of £10. Books were given by local gentry and Rev. Hawkins would later give volumes from his travels to Japan etc., and they were all entertained at intervals by the Garrett family who sang 'The picnic glee', 'Love at home', Gently down the stream' and 'The soldier's farewell'.

The hall was from a design from Mr. C. Pertwee, an architect from Chelmsford and cost between £600 - £700 pounds, about £88,000 in today's money. A large hall, which is on the right of the photo and at the rear of the building a Library and Committee Room. The

lighting was paraffin lamps and coal fires for heating. The School room was in the Library and was set up by Mrs Brise whom lived at Durwards Hall after Dr. Dixon. One of the school benches and the committee table are in the Henry Dixon Hall and the hinged writing slope which I still use, as all the caretakers before me.

So, what were the rules that were mentioned earlier: on the original lease date 5th February 1872 and titled 'Schedule of Rules governing the Workman's Hall.

1: That the said Hall is erected for the sole purpose of advance and the moral intellectual and social condition of Working men and their families.

2: That the said Henry Dixon will forthwith transfer to Trustees the said Hall who are to have entire management of carrying out the objects for which the said Hall is erected and as declared by these presents. That the Trustees in the first instance by named by the said Henry Dixon including Sir Thomas Burch Western and the Rector of Rivenhall and it is further declared that the Owner of Felix Hall for the time being and the Rector of Rivenhall for the same shall always be two Trustees.

3: That the Committee consisting of three of the Trustees and two members of the Hall who are not Trustees shall be appointed who shall have the direction and management of its work requirements according to the rules.

4: That no person who is under the age of twelve years shall be eligible to become a member.

5: That to admission of members shall be under the control of the managing Committee.

6: That to constitute members shall be under the control of the managing Committee.

7: That no person shall be excluded from the Hall on the ground of any political or religious opinions he may entertain.

8: That no Lectures on religious or political subjects shall be delivered in the Hall or on the premises.

9: That no alcoholic drinks shall be allowed in the Hall and no intoxicated person shall be allowed to enter.

10: The pastimes and games such as Chess, Backgammon, Bagatelle and Draughts may be permitted but no Cards or Dice or any form of Gambling for money or otherwise shall be allowed.

11: That once a week during the Winter months and occasionally as opportunities offer during the Summer, there shall be evening entertainments consisting of reading, music and singing to which members shall be allowed to bring their Wives and families free of charge.

12: That the Hall shall be open every day in the Week except on Sundays for eight to nine in the morning, from one to two in the day and from six to nine in the evening. Coffee and Tea may be provided at a penny per mug. Men whose work is near the Hall will have a comfortable room to take their meal in.

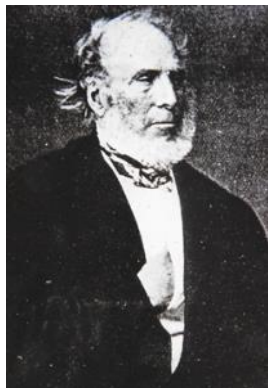
Members would pay 1d (one penny in today's money is about 30p) which would give them entrance to the hall at opening times and events that took place. The use of the library, the games which also included a billiard table and a dart board at a later date. I would be a comfort, well warmed and lighted. Newspapers, magazines, both daily and weekly would be put upon the table and refreshments supplied at reasonable prices. Smoking was allowed.

From the opening until 1965 the following caretakers and their families lived at the hall: Mr Wood, Mr Gooch, Mr O'shea, Mr Say, Mr Wood, Mr Jenkins, Mr Butler, Mr Clarke, Mr Andrews and my family under Mrs Taylor.

Of course over the 93 years of the hall being open we will look at more detail next year including a brief history of Dr. Henry Dixon, the Allotments and the day to day events in the hall. Also how the hall became important during the wars and how it was used as a courtroom.



Photo of Workmen's Hall taken around the time of the opening in 1872. Maybe the couple standing at the gate are William (47) and Emma (46) Wood the first Caretakers who had two children on the 1881 census Fredrick 13 and Violet 10



A photo portrait of Dr. Henry Dixon

Darker nights make your home look like you are in

With many of us now working from home it is easy for to forget about our home security, what would have been routinely thought of before we left for work can easily be forgotten. Autumn brings darker nights, whether working from home, going out to work or just popping out for “a moment” later in the afternoon ensure that either lights in the house are left on or are operated by a timer to come on when it gets dark. **A home in darkness looks unoccupied and becomes an attraction to the burglar.** After dark have energy efficient lights on in rooms that replicate what your home looks like when you are in.

As well as making sure your home and garden are secure when you leave don't forget outside lighting (activated by a “dusk till dawn sensor” is best to the front of the house) may deter thieves. There are also TV simulators such as “Fake TV” that produces lighting that resembles a television switched on within a room. Other products available to make it appear that you are home are a movement sensor that activates an appliance plugged into a plug socket and doorbells that you can answer remotely after viewing the caller; an internet search will find these and other security products.

If you would like further advice regarding security please look at the Essex Police website www.essex.police.uk/cp/crime-prevention/ and https://www.securedbydesign.com/ .

Naturally we also ask locals to report any unusual activity to police; in an emergency on 999 or after the event on 101 or “Do it online” www.essex.police.uk/do-it-online/report-a-crime/ or to Crimestoppers anonymously on 0800 555 111.

RIVENHALL GARDENING CLUB

The Club's ANNUAL GENERAL MEETING was held in Rivenhall village hall on Tuesday 11th October 2022. We are pleased to report that this last year has been a better one for the Club after a very difficult 2020/21 when funds became very low. We have enjoyed a wide range of speakers, a visit to RHS Hyde Hall in July and an August afternoon tea. April saw our Daffodil Show and July our Summer Flower Show. It was with great regret that the **all** important Autumn Show had to be cancelled because of the low number of entries, caused in the main by the extreme summer weather conditions. We now look forward to seeing what the coming year brings.

The Committee for 2022/23 are: Chairman/Show Secretary – Tracy Scott. Dep. Chairman – Don Scott. Club Secretary – Carole McCarthy. Club Treasurer – Elizabeth Acharyya. Committee Members: Maurice Bacon. Susan Donnell.

Competition Results:

Horticultural – 1st Karen Dakin (one entry).

Domestic – 1st Karen Dakin (one entry).

Flower of the Month – 1st Karen Dakin. 2nd Susan Donnell. (two entries).

Photo of the Month –

1st Susan Donnell. 2nd Jenny Claydon. 3rd Karen Dakin.

Heaviest Pumpkin Competition:

1st Karen Dakin (3 stone). 2nd Bob Turner (1 stone) 3rd Charlie Dakin (81b

At our SEPTEMBER meeting Lee McAlpin from Colchester Zoo gave an illustrated talk about the care that is given to the animals in their charge. This was quite a surprising and interesting talk about the 'Freedoms' that the animals are entitled to. Freedom from thirst, hunger and malnutrition with a good balanced diet. A suitable environment which allows the animals to express normal behaviour free from pain, fear and distress. The well being, mental stimulation and social and safety needs of the animals are considered and showing great intelligence it was interesting to see the different types of training given that enables the animal to be suitably responsive

when the Keeper or the Vet wants to examine them in their enclosure, which in itself is designed to minimise the risk of injury. Facts: Food is left hanging for the lions but placed in buckets for the monkeys. There are 31 flamingos in the Zoo and the Meerkats are probably the most popular, drawing large crowds.

Competition results:

Horticultural –

1st Cyril Philpott. 2nd Maurice Bacon. 3rd Karen Dakin

Domestic -

1st Karen Dakin. 2nd Jenny Claydon. (2 entries)

Flower of the Month -

1st Maurice Bacon. 2nd Karen Dakin 3rd Cyril Philpott.

Photography -

1st Jenny Claydon. 2nd Karen Dakin (2 entries)

The Club's next meeting will be on **Tuesday 5th November 2022**, 7.30pm in Rivenhall village hall. The speaker will be Ray Howe of the Allotment Association.

Competitions will be: Horticultural – any vegetable. Domestic – 3 jam tarts. Flower of the Month. Photograph of the Month.

Entrance is £2 to include refreshment. We are a small Club and should love to welcome new members and visitors. We have interesting speakers (not all garden related). Flower Shows. An annual visit to a garden of interest. Social occasions. We look forward to seeing you. For enquiries or further details contact the Club Secretary on 01376 – 512781.

Twelve tips for Christmas...and after

With Christmas rapidly approaching here are a few seasonal tips to help keep you safe at home, shopping, visiting, and after Christmas too:

1. If you need to store Christmas food and drink, presents and other goodies within garages and outbuildings, ensure what you are storing is out of sight and that the building is securely locked with good quality well fitted locks. Treat your shed to a shed alarm.
2. Avoid tempting window shopping burglars; don't leave

presents and valuables on full view in front of a window. Having parcels delivered, may be out, make sure that you make suitable secure delivery arrangements to reduce the risk of theft.

3. Whenever leaving the house always ensure that your windows and doors are closed and locked. Don't attract burglars to your home by leaving it in darkness; leave lights on timers, perhaps treat yourself to a TV simulator too.
4. Lock gates to keep unwanted visitors from getting to the rear of your home.
5. When you go to leave the house and find that your car is all iced up, don't leave it unattended with the engine running to de-ice it. It only takes a second to steal your car and it would invalidate any insurance claim.
6. Park safely; look for a 'Park Mark' accredited car park www.parkmark.co.uk/car-park-finder Check that your car is locked before you leave it and don't leave valuables and gifts on display in your car.
7. Whether an evening out or Christmas shopping keep your bags, handbags, wallets and mobile safe. Busy places make it easier for the sneak thief, so be alert at all times.
8. A Christmas get together – make sure that you have considered how you are getting home in advance and avoid using unlicensed taxis. Ensure you drink responsibly, social distance and are aware of your surroundings, whilst keeping your drink and belongings safe. www.suzylamplugh.org/Pages/FAQs/Category/personal-safety
9. Watch what you put on social media; check your settings to ensure that you are not broadcasting when you are not at home and the lovely gifts you may have received.
10. After Christmas don't advertise your nice gifts to the thieves by putting the empty boxes out for collection, disguise them, fold them up inside out or put them inside another non-descript box.
11. Record your new property free on www.immobilise.com , install tracking and security apps on relevant electrical and computer products. Consider a property marking product.

12. **Have a Great Christmas and New Year!!** 😊

For further crime prevention advice see: www.essex.police.uk/cp/crime-prevention/ or <https://www.securedbydesign.com/guidance/crime-prevention-advice>

Audrey Mary Brown (1923 - 2022)

Audrey was born in Woolpit, Suffolk on 18 September 1923 and died at her home in Rivenhall End on 04 August 2022. She was the daughter of Sidney Bendall, a builder, and Emily Underwood: she had five brothers and sisters.

When aged 18 in 1941, Audrey joined the Women's Auxiliary Airforce where she served as a Radio Operator, logging the aircrew as they flew sorties over occupied Europe, then logging all the returning crew. When the war ended, Audrey was invited by one admiring crew to take a flight in their Lancaster (what a privilege). "During the war" - *thank you Uncle Albert*, she took charge of a barrage balloon crew and in that capacity travelled widely: the family recalled that Audrey seemed to have a military anecdote about every place they visited or mentioned thereafter!



In 1945 at the end of hostilities, Audrey had made the rank of Corporal - a terrific achievement for a country girl: she returned to civilian life and worked initially as a telephonist. In 1947, she married Robert John Davey and they had seven children - Elizabeth and Robert (twins), Christopher, Peter, Paul, Lindsey and Mark. At weekends, the family enjoyed regular trips to the seaside in their dad's large old grey van. Money was tight but Audrey would take on many casual, local jobs on farms; often potato harvesting and fruit and veg' picking.

She then took a permanent job at Marconi, becoming supervisor of their microchip processing department (Audrey worked there until she was 70).

In 1977, Audrey married Frank Brown. Frank had a cottage in Rivenhall End which had a big garden and that garden was eventually to become the love of her life. She was very keen on her fruit, her vegetables and her shrubs, and she gardened well into her 90s. Frank died in 1982 but Audrey continued to run the house and manage the garden, selling flowers and plants and becoming quite an authority in the process. There was no escape - all the family

were taught about all things horticultural!

She loved to knit and latterly taught herself to crochet: she would donate many of her highly valued wares to charities and hospitals across the country: Audrey loved the pleasure of making others happy. She would also make floral displays for Rivenhall Primary School.

Audrey liked memorable birthdays, and one in particular comes to her children's mind. For her 90th birthday, a family helicopter flight across London was arranged. They all flew up the Thames - Tower Bridge - Tower of London - Houses of Parliament, then Trafalgar Square - Saint Paul's Cathedral and much more: doubtless that kindled memories of that 1945 surprise Lancaster bomber flight.

On the home front, Audrey's life centred on her family and friends; teaching and advising them, growing them and nurturing them. She liked her sport and had "strong" views on politicians, snooker players, darts matches, football teams and tennis players ... bring on the next match!!

What a lovely lady. The family arranged a delightful memorial service in our St Mary's and All Saints Church on Thursday 1st September: it was very moving indeed.

First World War

Rivenhall Special Constables

Each village and town appointed Special Constables during the First World War. These men were given some training and were instrumental in the plans if we had been invaded for evacuation etc., Below is our little troop of Special Constables in 1914-18 who already knew everyone who lived in the village or worked here.

We never lost any of our constables, but many areas did during this period of time.



Top

**A.W. Shelley, E. Parish, R.M. Bott, L.J. Cullen, W.
Cranmer**

Centre

**Rev. H.H. Willmott, J. Byford, W. Brice, W. Taber
G. Butcher, R. Scott, G.Rawlinson**

Front

Remembrance Sunday

13th November 10.50 am

**At the War Memorial With our Regular
Bugler**

**Followed By a service in the Church at
11 am**

CHARITY



QUIZ NIGHT

**For The House of Grace
homeless project
on**

**Saturday 19 November
7p.m. for 7.30p.m.**

**At the Henry Dixon Hall, Rivenhall
End**

**Tickets £8, teams of up to eight,
Nibbles provided but bring your own
drinks**

Organisations in Rivenhall

Clerk to Parish Council	Keith Taylor	516975
Email parishclerk@rivenhallparishcouncil.net	meets every first Tuesday	
End to End Nature Care	Simon Taylor	01621 810141
Gardening Club	Carole McCarthy	512781
Meets on 2nd Tuesday at 7.30pm in Village Hall		
Carpet Bowls	Mick Marshall	512836
Meets every Thursday at 7.30pm in Village Hall		
Playing Fields Association	Mick Marshall	01376 512836
Spread Your Wings Dance Acam	Laura Pearson	01376 741317

Facilities

Hire of Village Hall	email rivenhallvillagehall@gmail.com	
Hire of Henry Dixon Hall	Tracy Scott	571551
Oak Store Rivenhall "Open All Hour" Tel AJ		01376 538838

Organisations in Silver End

Clerk to Parish Council	Mrs B. M. Temple	618464
Email parishclerk@silverendparishcouncil.gov.uk		
Bowls Club	Paul Mann	07551 006906
Children's Centre	Faye Savage	587960
Neighbourhood Police	Braintree Policing Dial 101	
Congregational Church	Sharon Gray	583913
Friendship Club	Maureen Green	585275
Silver End Gad Abouts	Denise Sullens Smith	07952 992782
Gardening Club	Liz Woor	585586
Guiding Group	Carol Hutchings	07857 663959
Neighbourhood Watch	Judy Hill	07896 975839
Scouting Group	Elaine Hall on +44	7885 489788
St Mary's Church (R.C.)	Vivian Phillips	583598
Tennis Club	Jason Cairns	584581
Workers Educational Assoc.	Brian Gillion	583706
Luncheon Club	Helen Thomson	583255
Doctors Surgery		583387
Silver End Heritage Society	Jackie Nesbitt	07707 084608
Silver End United Football Club	Mark Edgell	584639 Web
Site www.silverendunitedfc.co.uk		
Women's Institute	Brenda Warnes	07931 548193
Community Warden	Jackie Windard	07785 515526
Post Office in Co-op - please note that it closes at Lunchtime 1-2pm		
Closes 1 pm Wednesday and 12.30 pm Saturday		
Library: Tues & Thurs - 2pm to 6pm Saturday 9am to 1pm		

HUNNABALL

Family Funeral Services



Here **whenever** you need us

Funerals | Memorials | Pre-paid Funeral Plans

Hunnaball of Witham

1 Coach House Way, Newland Street, Witham CM8 1YJ

01376 511592

www.hunnaball.co.uk

JANET C DAVIES

Lady Funeral Directors



**Our Ladies
in Hats**

*"funerals with
a gentle touch"*

Funerals | Memorials
Pre-paid Funeral Plans

Janet C Davies of Kelvedon

233 High Street, Kelvedon CO5 9JD

01376 573691

www.hunnaball.co.uk

DRH LANDSCAPES

Est. 1987

Quality Comes 1st

**Garden Landscape and Design – Hard Landscaping – Soft Landscaping
Grounds Maintenance for Private and Commercial Premises**

- Are you planning to redesign and landscape your garden?
- Does your garden just need a little TLC or a complete makeover?
- Are you looking for assistance with regular garden maintenance or perhaps a one-off visit to get things back in order?
- Is your lawn looking tired? Would you like a new replacement lawn or artificial lawn instead?

We are a family run business with over 30 years of experience working in the ever changing world of landscape management, business regulations and horticulture, with full public and employer liability insurance, as well as being a fully registered waste carrier with the Environmental Agency.



OFFICE: 01376 514142

We welcome...



EMAIL: info@drhlandscapes.com

www.drhlandscapes.com

Harcog Centre, 77-83 Maldon Road, Witham, Essex CM8 1HP

